



# CNK1 Polyclonal Antibody

<b>Catalog No</b>	YP-Ab-03778
<b>Isotype</b>	IgG
<b>Reactivity</b>	Human;Mouse;Rat
<b>Applications</b>	WB;IHC;IF;ELISA
<b>Gene Name</b>	CNKSR1
<b>Protein Name</b>	Connector enhancer of kinase suppressor of ras 1
<b>Immunogen</b>	The antiserum was produced against synthesized peptide derived from human CNKR1. AA range:491-540
<b>Specificity</b>	CNK1 Polyclonal Antibody detects endogenous levels of CNK1 protein.
<b>Formulation</b>	Liquid in PBS containing 50% glycerol, 0.5% BSA and 0.02% sodium azide.
<b>Source</b>	Polyclonal, Rabbit,IgG
<b>Purification</b>	The antibody was affinity-purified from rabbit antiserum by affinity-chromatography using epitope-specific immunogen.
<b>Dilution</b>	Western Blot: 1/500 - 1/2000. Immunohistochemistry: 1/100 - 1/300. Immunofluorescence: 1/200 - 1/1000. ELISA: 1/10000. Not yet tested in other applications.
<b>Concentration</b>	1 mg/ml
<b>Purity</b>	≥90%
<b>Storage Stability</b>	-20°C/1 year
<b>Synonyms</b>	CNKSR1; CNK1; Connector enhancer of kinase suppressor of ras 1; Connector enhancer of KSR 1; CNK homolog protein 1; CNK1; hCNK1; Connector enhancer of KSR-like
<b>Observed Band</b>	80kD
<b>Cell Pathway</b>	Cytoplasm . Membrane ; Peripheral membrane protein .
<b>Tissue Specificity</b>	Brain,Epithelium,Kidney,Liver,Neuroepithelium,Place
<b>Function</b>	function:May function as an adapter protein or regulator of Ras signaling pathways.,PTM:Phosphorylated on tyrosine.,similarity:Belongs to the CNKSR family.,similarity:Contains 1 CRIC domain.,similarity:Contains 1 PDZ (DHR) domain.,similarity:Contains 1 PH domain.,similarity:Contains 1 SAM (sterile alpha motif) domain.,subunit:Interacts with RHO and RALGDS.,
<b>Background</b>	This gene encodes a protein containing several motifs involved in protein-protein interaction, including PDZ, PH (Pleckstrin homology), and SAM (sterile alpha motif) domains. The encoded protein acts as a scaffold component for receptor tyrosine kinase signaling and may mediate crosstalk between different signaling pathways. Alternative splicing results in multiple transcript variants. [provided by RefSeq, Jul 2014],



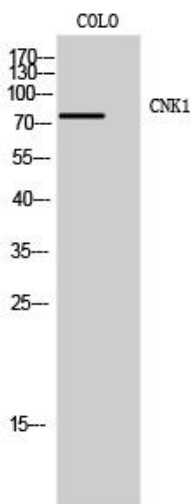
**matters needing attention**

Avoid repeated freezing and thawing!

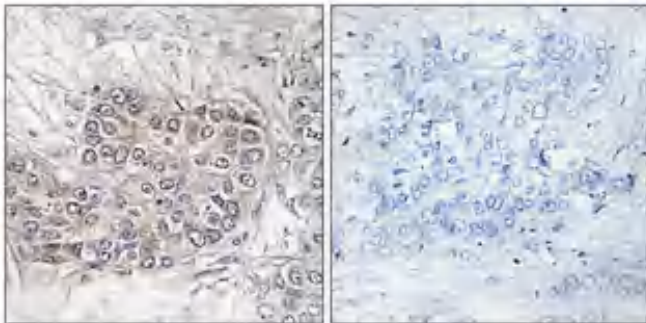
**Usage suggestions**

This product can be used in immunological reaction related experiments. For more information, please consult technical personnel.

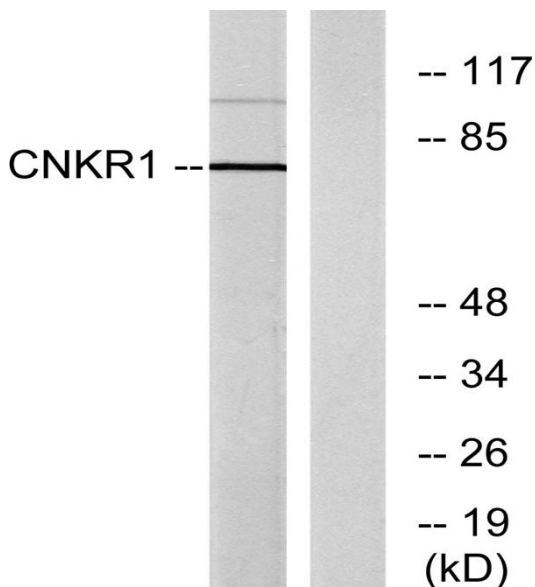
## Products Images



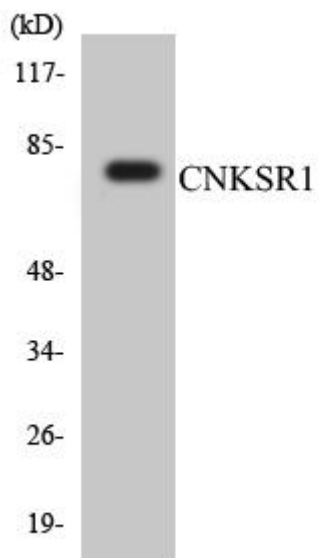
Western Blot analysis of COLO cells using CNK1 Polyclonal Antibody



Immunohistochemical analysis of paraffin-embedded Human breast cancer. Antibody was diluted at 1:100(4° overnight). High-pressure and temperature Tris-EDTA, pH8.0 was used for antigen retrieval. Negative control (right) obtained from antibody was pre-absorbed by immunogen peptide.



Western blot analysis of lysates from COLO205 cells, using CNKR1 Antibody. The lane on the right is blocked with the synthesized peptide.



Western blot analysis of the lysates from HT-29 cells using CNKSR1 antibody.